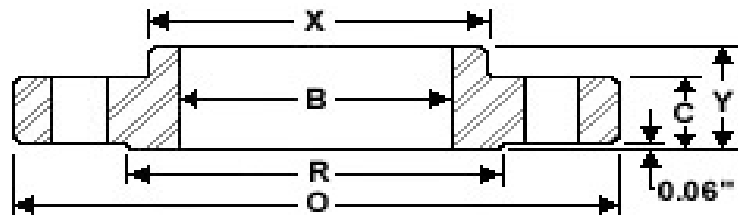


# Slip-On Flanges

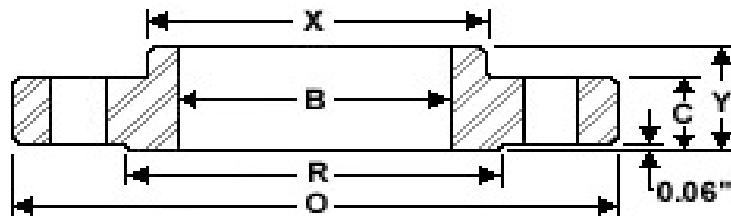
# Class 150



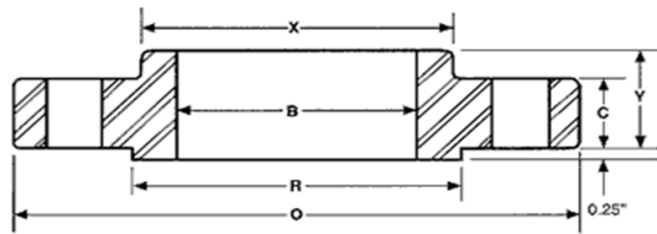
Nominal size		Outside diam. of flange	Thick. of flange	Diam. of raised face	Diam of hub at base	Length thru hub	Diam. of hub at point of welding	No. of holes	Diam. of holes	Diam. of bolts	Diam. of bolt circle	Approx. weight pounds Kg
		O	C	R	X	Y	B					
in.	1/2"	3.5	0.44	1.38	1.19	0.62	0.88	4	0.62	1/2"	2.38	1
mm.		88.9	11.2	35.1	30.2	15.7	22.4		15.7	12.7	60.5	0.5
in.	3/4"	3.88	0.5	1.69	1.5	0.62	1.09	4	0.62	1/2"	2.75	2
mm.		98.6	12.7	42.9	38.1	15.7	27.7		15.7	12.7	69.9	1
in.	1"	4.25	0.56	2	1.94	0.69	1.36	4	0.62	1/2"	3.12	2
mm.		108	14.2	50.8	49.3	17.5	34.5		15.7	12.7	79.2	1
in.	1 1/4"	4.62	0.62	2.5	2.31	0.81	1.7	4	0.62	1/2"	3.5	3
mm.		117.3	15.7	63.5	58.7	20.6	43.2		15.7	12.7	88.9	1
in.	1 1/2"	5	0.69	2.88	2.56	0.88	1.95	4	0.62	1/2"	3.88	3
mm.		127	17.5	73.2	65	22.4	49.5		15.7	12.7	98.6	1
in.	2"	6	0.75	3.62	3.06	1	2.44	4	0.75	5/8"	4.75	5
mm.		152.4	19.1	91.9	77.7	25.4	62		19.1	15.9	120.7	2
in.	2 1/2"	7	0.88	4.12	3.56	1.12	2.94	4	0.75	5/8"	5.5	7
mm.		177.8	22.4	104.6	90.4	28.4	74.7		19.1	15.9	139.7	3
in.	3"	7.5	0.94	5	4.25	1.19	3.57	4	0.75	5/8"	6	8
mm.		190.5	23.9	127	108	30.2	90.7		19.1	15.9	152.4	4
in.	3 1/2"	8.5	0.94	5.5	4.81	1.25	4.07	8	0.75	5/8"	7	11
mm.		215.9	23.9	139.7	122.2	31.8	103.4		19.1	15.9	177.8	5
in.	4"	9	0.94	6.19	5.31	1.31	4.57	8	0.75	5/8"	7.5	13
mm.		228.6	23.9	157.2	134.9	33.3	116.1		19.1	15.9	190.5	6
in.	5"	10	0.94	7.31	6.44	1.44	5.66	8	0.88	3/4"	8.5	15
mm.		254	23.9	185.7	163.6	36.6	143.8		22.4	19.1	215.9	7
in.	6"	11	1	8.5	7.56	1.56	6.72	8	0.88	3/4"	9.5	19
mm.		279.4	25.4	215.9	192	39.6	170.7		22.4	19.1	241.3	9
in.	8"	13.5	1.12	10.62	9.69	1.75	8.72	8	0.88	3/4"	11.75	30
mm.		342.9	28.4	269.7	246.1	44.5	221.5		22.4	19.1	298.5	14
in.	10"	16	1.19	12.75	12	1.94	10.88	12	1	7/8"	14.25	43
mm.		406.4	30.2	323.9	304.8	49.3	276.4		25.4	22.2	362	20
in.	12"	19	1.25	15	14.38	2.19	12.88	12	1	7/8"	17	64
mm.		482.6	31.8	381	365.3	55.6	327.2		25.4	22.2	431.8	29
in.	14"	21	1.38	16.25	15.75	2.25	14.14	12	1.12	1	18.75	90
mm.		533.4	35.1	412.8	400.1	57.2	359.2		28.4	25.4	476.3	41
in.	16"	23.5	1.44	18.5	18	2.5	16.16	16	1.12	1	21.25	98
mm.		596.9	36.6	469.9	457.2	63.5	410.5		28.4	25.4	539.8	44
in.	18"	25	1.56	21	19.88	2.69	18.18	16	1.25	1 1/8"	22.75	130
mm.		635	39.6	533.4	505	68.3	461.8		31.8	28.6	577.9	59
in.	20"	27.5	1.69	23	22	2.88	20.2	20	1.25	1 1/8"	25	165
mm.		698.5	42.9	584.2	558.8	73.2	513.1		31.8	28.6	635	75
in.	24"	32	1.88	27.25	26.12	3.25	24.25	20	1.38	1 1/4"	29.5	220
mm.		812.8	47.8	692.2	663.4	82.6	616		35.1	31.8	749.3	100

# Slip-On Flanges

# Class 300



Nominal size		Outside diam. of flange	Thick. of flange	Diam. of raised face	Diam of hub at base	Length thru hub	Diam. of hub at point of welding	No. of holes	Diam. of holes	Diam. of bolts	Diam. of bolt circle	Approx. weight pounds Kg
		O	C	R	X	Y	B					
in.	1/2"	3.75	0.56	1.38	1.5	0.88	0.88	4	0.62	1/2"	2.62	2
mm.		95.3	14.2	35.1	38.1	22.4	22.4		15.7	12.7	66.5	1
in.	3/4"	4.62	0.62	1.69	1.88	1	1.09	4	0.75	5/8"	3.25	3
mm.		117.3	15.7	42.9	47.8	25.4	27.7		19.1	15.9	82.6	1
in.	1"	4.88	0.69	2	2.12	1.06	1.36	4	0.75	5/8"	3.5	3
mm.		124	17.5	50.8	53.8	26.9	34.5		19.1	15.9	88.9	1
in.	1 1/4"	5.25	0.75	2.5	2.5	1.06	1.7	4	0.75	5/8"	3.88	4
mm.		133.4	19.1	63.5	63.5	26.9	43.2		19.1	15.9	98.6	2
in.	1 1/2"	6.12	0.81	2.88	2.75	1.19	1.95	4	0.88	3/4"	4.5	6
mm.		155.4	20.6	73.2	69.9	30.2	49.5		22.4	19.1	114.3	3
in.	2"	6.5	0.88	3.62	3.31	1.31	2.44	8	0.75	5/8"	5	7
mm.		165.1	22.4	91.9	84.1	33.3	62		19.1	15.9	127	3
in.	2 1/2"	7.5	1	4.12	3.94	1.5	2.94	8	0.88	3/4"	5.88	10
mm.		190.5	25.4	104.6	100.1	38.1	74.7		22.4	19.1	149.4	5
in.	3"	8.25	1.12	5	4.62	1.69	3.57	8	0.88	3/4"	6.62	13
mm.		209.6	28.4	127	117.3	42.9	90.7		22.4	19.1	168.1	6
in.	3 1/2"	9	1.19	5.5	5.25	1.75	4.07	8	0.88	3/4"	7.25	17
mm.		228.6	30.2	139.7	133.4	44.5	103.4		22.4	19.1	184.2	8
in.	4"	10	1.25	6.19	5.75	1.88	4.57	8	0.88	3/4"	7.88	22
mm.		254	31.8	157.2	146.1	47.8	116.1		22.4	19.1	200.2	10
in.	5"	11	1.38	7.31	7	2	5.66	8	0.88	3/4"	9.25	28
mm.		279.4	35.1	185.7	177.8	50.8	143.8		22.4	19.1	235	13
in.	6"	12.5	1.44	8.5	8.12	2.06	6.72	12	0.88	3/4"	10.62	39
mm.		317.5	36.6	215.9	206.2	52.3	170.7		22.4	19.1	269.7	18
in.	8"	15	1.62	10.62	10.25	2.44	8.72	12	1	7/8"	13	58
mm.		381	41.1	269.7	260.4	62	221.5		25.4	22.2	330.2	26
in.	10"	17.5	1.88	12.75	12.62	2.62	10.88	16	1.12	1	15.25	81
mm.		444.5	47.8	323.9	320.5	66.5	276.4		28.4	25.4	387.4	37
in.	12"	20.5	2	15	14.75	2.88	12.88	16	1.25	1 1/8"	17.75	115
mm.		520.7	50.8	381	374.7	73.2	327.2		31.8	28.6	450.9	52
in.	14"	23	2.12	16.25	16.75	3	14.14	20	1.25	1 1/8"	20.25	165
mm.		584.2	53.8	412.8	425.5	76.2	359.2		31.8	28.6	514.4	75
in.	16"	25.5	2.25	18.5	19	3.25	16.16	20	1.38	1 1/4"	22.5	190
mm.		647.7	57.2	469.9	482.6	82.6	410.5		35.1	31.8	571.5	86
in.	18"	28	2.38	21	21	3.5	18.18	24	1.38	1 1/4"	24.75	250
mm.		711.2	60.5	533.4	533.4	88.9	461.8		35.1	31.8	628.7	113
in.	20"	30.5	2.5	23	23.12	3.75	20.2	24	1.38	1 1/4"	27	315
mm.		774.7	63.5	584.2	587.2	95.3	513.1		35.1	31.8	685.8	143
in.	24"	36	2.75	27.25	27.62	4.19	24.25	24	1.62	1 1/2"	32	475
mm.		914.4	69.9	692.2	701.5	106.4	616		41.1	38.1	812.8	215



Nominal size	Outside diam. of flange	Thick. of flange	Diam. of raised face	Diam of hub at base	Length thru hub	Diam. of hub at point of welding	No. of holes	Diam. of holes	Diam. of bolts	Diam. of bolt circle	Approx. weight pounds Kg
	O	C	R	X	Y	B					

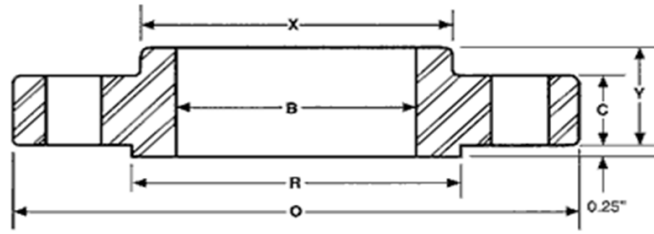
in.	1/2"
mm.	
in.	3/4"
mm.	
in.	1"
mm.	
in.	1 1/4"
mm.	
in.	1 1/2"
mm.	
in.	2"
mm.	
in.	2 1/2"
mm.	
in.	3"
mm.	
in.	3 1/2"
mm.	

**Sizes 1/2" thru 3 1/2" are identical with class 600**

in.	4"	10	1.38	6.19	5.75	2	4.57	8	1	7/8"	7.88	26
mm.		254	35.1	157.2	146.1	50.8	116.1		25.4	22.2	200.2	12
in.	5"	11	1.5	7.31	7	2.12	5.66	8	1	7/8"	9.25	31
mm.		279.4	38.1	185.7	177.8	53.8	143.8		25.4	22.2	235	14
in.	6"	12.5	1.62	8.5	8.12	2.25	6.72	12	1	7/8"	10.62	44
mm.		317.5	41.1	215.9	206.2	57.2	170.7		25.4	22.2	269.7	20
in.	8"	15	1.88	10.62	10.25	2.69	8.72	12	1.12	1	13	67
mm.		381	47.8	269.7	260.4	68.3	221.5		28.4	25.4	330.2	30
in.	10"	17.5	2.12	12.75	12.62	2.88	10.88	16	1.25	1 1/8"	15.25	91
mm.		444.5	53.8	323.9	320.5	73.2	276.4		31.8	28.6	387.4	41
in.	12"	20.5	2.25	15	14.75	3.12	12.88	16	1.38	1 1/4"	17.75	130
mm.		520.7	57.2	381	374.7	79.2	327.2		35.1	31.8	450.9	59
in.	14"	23	2.38	16.25	16.75	3.31	14.14	20	1.38	1 1/4"	20.25	180
mm.		584.2	60.5	412.8	425.5	84.1	359.2		35.1	31.8	514.4	82
in.	16"	25.5	2.5	18.5	19	3.69	16.16	20	1.5	1 3/8"	22.5	235
mm.		647.7	63.5	469.9	482.6	93.7	410.5		38.1	34.9	571.5	107
in.	18"	28	2.62	21	21	3.88	18.18	24	1.5	1 3/8"	24.75	285
mm.		711.2	66.5	533.4	533.4	98.6	461.8		38.1	34.9	628.7	129
in.	20"	30.5	2.75	23	23.12	4	20.2	24	1.62	1 1/2"	27	345
mm.		774.7	69.9	584.2	587.2	101.6	513.1		41.1	38.1	685.8	156
in.	24"	36	3	27.25	27.62	4.5	24.25	24	1.88	1 3/4"	32	510
mm.		914.4	76.2	692.2	701.5	114.3	616		47.8	44.5	812.8	231

# Slip-On Flanges

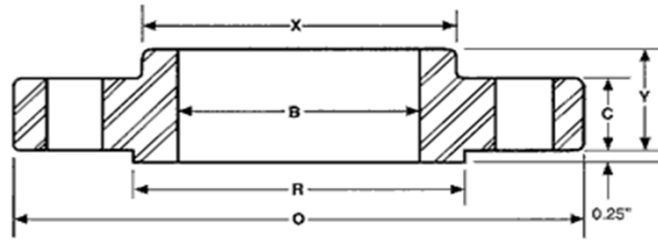
# Class 600



Nominal size		Outside diam. of flange	Thick. of flange	Diam. of raised face	Diam of hub at base	Length thru hub	Diam. of hub at point of welding	No. of holes	Diam. of holes	Diam. of bolts	Diam. of bolt circle	Approx. weight pounds Kg
		O	C	R	X	Y	B					
in.	1/2"	3.75	0.56	1.38	1.5	0.88	0.88	4	0.62	1/2"	2.62	2
mm.		95.3	14.2	35.1	38.1	22.4	22.4		15.7	12.7	66.5	1
in.	3/4"	4.62	0.62	1.69	1.88	1	1.09	4	0.75	5/8"	3.25	3
mm.		117.3	15.7	42.9	47.8	25.4	27.7		19.1	15.9	82.6	1
in.	1"	4.88	0.69	2	2.12	1.06	1.36	4	0.75	5/8"	3.5	4
mm.		124	17.5	50.8	53.8	26.9	34.5		19.1	15.9	88.9	2
in.	1 1/4"	5.25	0.81	2.5	2.5	1.12	1.7	4	0.75	5/8"	3.88	5
mm.		133.4	20.6	63.5	63.5	28.4	43.2		19.1	15.9	98.6	2
in.	1 1/2"	6.12	0.88	2.88	2.75	1.25	1.95	4	0.88	3/4"	4.5	7
mm.		155.4	22.4	73.2	69.9	31.8	49.5		22.4	19.1	114.3	3
in.	2"	6.5	1	3.62	3.31	1.44	2.44	8	0.75	5/8"	5	9
mm.		165.1	25.4	91.9	84.1	36.6	62		19.1	15.9	127	4
in.	2 1/2"	7.5	1.12	4.12	3.94	1.62	2.94	8	0.88	3/4"	5.88	13
mm.		190.5	28.4	104.6	100.1	41.1	74.7		22.4	19.1	149.4	6
in.	3"	8.25	1.25	5	4.62	1.81	3.57	8	0.88	3/4"	6.62	16
mm.		209.6	31.8	127	117.3	46	90.7		22.4	19.1	168.1	7
in.	3 1/2"	9	1.38	5.5	5.25	1.94	4.07	8	1	7/8"	7.25	21
mm.		228.6	35.1	139.7	133.4	49.3	103.4		25.4	22.2	184.2	10
in.	4"	10.75	1.5	6.19	6	2.12	4.57	8	1	7/8"	8.5	37
mm.		273.1	38.1	157.2	152.4	53.8	116.1		25.4	22.2	215.9	17
in.	5"	13	1.75	7.31	7.44	2.38	5.66	8	1.12	1	10.5	63
mm.		330.2	44.5	185.7	189	60.5	143.8		28.4	25.4	266.7	29
in.	6"	14	1.88	8.5	8.75	2.62	6.72	12	1.12	1	11.5	80
mm.		355.6	47.8	215.9	222.3	66.5	170.7		28.4	25.4	292.1	36
in.	8"	16.5	2.19	10.62	10.75	3	8.72	12	1.25	1 1/8	13.75	115
mm.		419.1	55.6	269.7	273.1	76.2	221.5		31.8	28.6	349.3	52
in.	10"	20	2.5	12.75	13.5	3.38	10.88	16	1.38	1 1/4	17	170
mm.		508	63.5	323.9	342.9	85.9	276.4		35.1	31.8	431.8	77
in.	12"	22	2.62	15	15.75	3.62	12.88	20	1.38	1 1/4	19.25	200
mm.		558.8	66.5	381	400.1	91.9	327.2		35.1	31.8	489	91
in.	14"	23.75	2.75	16.25	17	3.69	14.14	20	1.5	1 3/8	20.75	230
mm.		603.3	69.9	412.8	431.8	93.7	359.2		38.1	34.9	527.1	104
in.	16"	27	3	18.5	19.5	4.19	16.16	20	1.62	1 1/2	23.75	330
mm.		685.8	76.2	469.9	495.3	106.4	410.5		41.1	38.1	603.3	150
in.	18"	29.25	3.25	21	21.5	4.62	18.18	20	1.75	1 5/8	25.75	400
mm.		743	82.6	533.4	546.1	117.3	461.8		44.5	41.3	654.1	181
in.	20"	32	3.5	23	24	5	20.2	24	1.75	1 5/8	28.5	510
mm.		812.8	88.9	584.2	609.6	127	513.1		44.5	41.3	723.9	231
in.	24"	37	4	27.25	28.25	5.5	24.25	24	2	1 7/8	33	730
mm.		939.8	101.6	692.2	717.6	139.7	616		50.8	47.6	838.2	331

# Slip-On Flanges

# Class 900

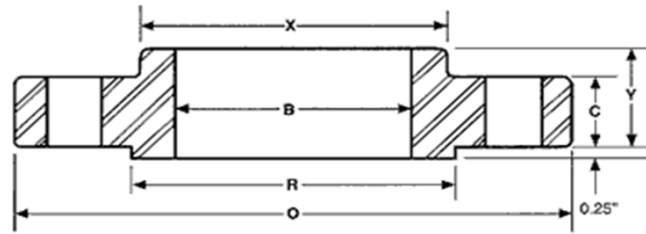


Nominal size	Outside diam. of flange	Thick. of flange	Diam. of raised face	Diam of hub at base	Length thru hub	Diam. of hub at point of welding	No. of holes	Diam. of holes	Diam. of bolts	Diam. of bolt circle	Approx. weight pounds	Kg
	O	C	R	X	Y	B						
in. 1/2"												
mm.												
in. 3/4"												
mm.												
in. 1"												
mm.												
in. 1 1/4"												
mm.												
in. 1 1/2"												
mm.												
in. 2"												
mm.												
in. 2 1/2"												
mm.												
in. 3"	9.5	1.5	5	5	2.12	3.57	8	1	7/8"	7.5	26	
mm.	241.3	38.1	127	127	53.8	90.7		25.4	22.2	190.5	12	
in. 4"	11.5	1.75	6.19	6.25	2.75	4.57	8	1.25	1 1/8	9.25	53	
mm.	292.1	44.5	157.2	158.8	69.9	116.1		31.8	28.6	235	24	
in. 5"	13.75	2	7.31	7.5	3.12	5.66	8	1.38	1 1/4	11	83	
mm.	349.3	50.8	185.7	190.5	79.2	143.8		35.1	31.8	279.4	38	
in. 6"	15	2.19	8.5	9.25	3.38	6.72	12	1.25	1 1/8	12.5	110	
mm.	381	55.6	215.9	235	85.9	170.7		31.8	28.6	317.5	50	
in. 8"	18.5	2.5	10.62	11.75	4	8.72	12	1.5	1 3/8	15.5	170	
mm.	469.9	63.5	269.7	298.5	101.6	221.5		38.1	34.9	393.7	77	
in. 10"	21.5	2.75	12.75	14.5	4.25	10.88	16	1.5	1 3/8	18.5	245	
mm.	546.1	69.9	323.9	368.3	108	276.4		38.1	34.9	469.9	111	
in. 12"	24	3.12	15	16.5	4.62	12.88	20	1.5	1 3/8	21	325	
mm.	609.6	79.2	381	419.1	117.3	327.2		38.1	34.9	533.4	147	
in. 14"	25.25	3.38	16.25	17.75	5.12	14.14	20	1.62	1 1/2	22	400	
mm.	641.4	85.9	412.8	450.9	130	359.2		41.1	38.1	558.8	181	
in. 16"	27.75	3.5	18.5	20	5.25	16.16	20	1.75	1 5/8	24.25	425	
mm.	704.9	88.9	469.9	508	133.4	410.5		44.5	41.3	616	193	
in. 18"	31	4	21	22.25	6	18.18	20	2	1 7/8	27	600	
mm.	787.4	101.6	533.4	565.2	152.4	461.8		50.8	47.6	685.8	272	
in. 20"	33.75	4.25	23	24.5	6.25	20.2	20	2.12	2	29.5	730	
mm.	857.3	108	584.2	622.3	158.8	513.1		53.8	50.8	749.3	331	
in. 24"	41	5.5	27.25	29.5	8	24.25	20	2.62	2 1/2	35.5	1400	
mm.	1041.4	139.7	692.2	749.3	203.2	616		66.5	63.5	901.7	635	

**Sizes 1/2" thru 2 1/2" are identical to Class 1500.**

# Slip-On Flanges

# Class 1500



Nominal size		Outside diam. of flange	Thick. of flange	Diam. of raised face	Diam of hub at base	Length thru hub	Diam. of hub at point of welding	No. of holes	Diam. of holes	Diam. of bolts	Diam. of bolt circle	Approx. weight pounds Kg
		O	C	R	X	Y	B					
in.	1/2"	4.75	0.88	1.38	1.5	1.25	0.88	4	0.88	3/4"	3.25	4
mm.		120.7	22.4	35.1	38.1	31.8	22.4		22.4	19.1	82.6	2
in.	3/4"	5.12	1	1.69	1.75	1.38	1.09	4	0.88	3/4"	3.5	5
mm.		130	25.4	42.9	44.5	35.1	27.7		22.4	19.1	88.9	2
in.	1"	5.88	1.12	2	2.06	1.62	1.36	4	1	7/8"	4	8
mm.		149.4	28.4	50.8	52.3	41.1	34.5		25.4	22.2	101.6	4
in.	1 1/4"	6.25	1.12	2.5	2.5	1.62	1.7	4	1	7/8"	4.38	9
mm.		158.8	28.4	63.5	63.5	41.1	43.2		25.4	22.2	111.3	4
in.	1 1/2"	7	1.25	2.88	2.75	1.75	1.95	4	1.12	1	4.88	12
mm.		177.8	31.8	73.2	69.9	44.5	49.5		28.4	25.4	124	5
in.	2"	8.5	1.5	3.62	4.12	2.25	2.44	8	1	7/8"	6.5	25
mm.		215.9	38.1	91.9	104.6	57.2	62		25.4	22.2	165.1	11
in.	2 1/2"	9.62	1.62	4.12	4.88	2.5	2.94	8	1.12	1	7.5	36
mm.		244.3	41.1	104.6	124	63.5	74.7		28.4	25.4	190.5	16
in.	3"	10.5	1.88	5	5.25	2.88		8	1.25	1 1/8"	8	48
mm.		266.7	47.8	127	133.4	73.2			31.8	28.6	203.2	22
in.	4"	12.25	2.12	6.19	6.38	3.56		8	1.38	1 1/4"	9.5	73
mm.		311.2	53.8	157.2	162.1	90.4			35.1	31.8	241.3	33
in.	5"	14.75	2.88	7.31	7.75	4.12		8	1.62	1 1/2"	11.5	130
mm.		374.7	73.2	185.7	196.9	104.6			41.1	38.1	292.1	59
in.	6"	15.5	3.25	8.5	9	4.69		12	1.5	1 3/8"	12.5	165
mm.		393.7	82.6	215.9	228.6	119.1			38.1	34.9	317.5	75
in.	8"	19	3.62	10.62	11.5	5.62		12	1.75	1 5/8"	15.5	260
mm.		482.6	91.9	269.7	292.1	142.7			44.5	41.3	393.7	118
in.	10"	23	4.25	12.75	14.5	6.25		12	2	1 7/8"	19	435
mm.		584.2	108	323.9	368.3	158.8			50.8	47.6	482.6	197
in.	12"	26.5	4.88	15	17.75	7.12		16	2.12	2	22.5	580
mm.		673.1	124	381	450.9	180.8			53.8	50.8	571.5	263
in.	14"	29.5	5.25	16.25	19.5			16	2.38	2 1/4"	25	
mm.		749.3	133.4	412.8	495.3				60.5	57.2	635	
in.	16"	32.5	5.75	18.5	21.75			16	2.62	2 1/2"	27.75	
mm.		825.5	146.1	469.9	552.5				66.5	63.5	704.9	
in.	18"	36	6.38	21	23.5			16	2.88	2 3/4"	30.5	
mm.		914.4	162.1	533.4	596.9				73.2	69.9	774.7	
in.	20"	38.75	7	23	25.25			16	3.12	3	32.75	
mm.		984.3	177.8	584.2	641.4				79.2	76.2	831.9	
in.	24"	46	8	27.25	30			16	3.62	3 1/2"	39	
mm.		1168.4	203.2	692.2	762				91.9	88.9	990.6	